

Learning Pathway



for Parkinson's Disease Nurse Specialists

[Click to enter](#)

Welcome

Contact us

How it works

Start

Welcome

Dear colleague,

As nurses, many of us struggle to find the right training opportunities to develop our skills in Parkinson's care.

Together in discussion with our colleagues, Parkinson's UK has created this bespoke Learning Pathway for Parkinson's disease nurse specialists in collaboration with the Parkinson's Academy. This simple roadmap brings together all available professional development and CPD opportunities in one place.

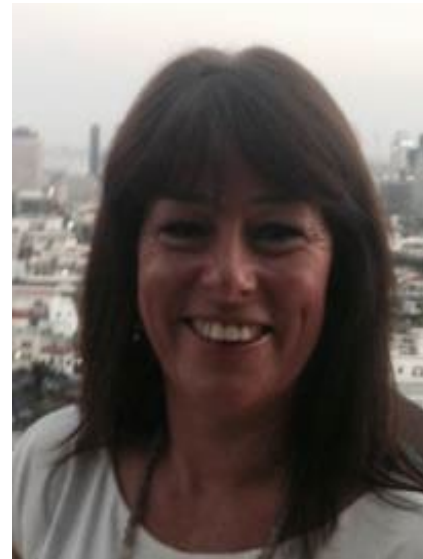
The Learning Pathway is easy to navigate - you can explore according to your band level and learning needs. And all the training courses listed are mapped against the Parkinson's Nurse Competencies and the NHS Knowledge and Skills Framework.

You can decide which level is most appropriate for you, but please do have a look at the other levels as you may learn further useful information.

It's very important that all of us can develop in order to provide the highest quality of care for people living with Parkinson's. So please, enjoy exploring and share with your colleagues.

And don't forget, it's our Learning Pathway – so if you discover a training course happening in your area that you think should be added, then please get in touch (see next page) so that we can keep the pathway up to date.

Best wishes,
Louise Ebenezer
Clinical Nurse Specialist for Parkinson's disease



Next

Welcome

Band 5

Band 6

Band 7/8

Resources



Contact us

We would love to know what you think of the Learning Pathway and if there are any other courses near you that could be added to it.

- ▶ **Email**
You can email us at: education@parkinsons.org.uk
- ▶ **Twitter**
Tweet using the handle: @ParkinsonsEN
- ▶ **Feedback form**
Fill in our easy [feedback form](#)

Next

Welcome

Band 5

Band 6

Band 7/8

Resources



How to use the Learning Pathway

The Learning Pathway is easy to navigate. You can explore according to your band level and learning needs by clicking on the icons.

Click on the circular icons on the right-hand menu to look at different nursing band levels and resources that may be useful to you.

For each band level you can explore different learning categories by clicking on the blue arrow icons.

You can find additional information for each course in the blue box like the one shown to the right.

- ▶ The overall course theme is shown in the white bar.
- ▶ All courses are mapped against the Parkinson's nurse Competencies and the NHS Knowledge and Skills Framework, details of which are shown in the blue section using the following abbreviations:

SC = specialist competency; KSF = Knowledge and Skills Framework; HWB = Health and Wellbeing; G = General

Please note all course information is correct at the time of publication in July 2023. The next update for this publication is January 2024.



Palliative care
SC1, 3, 5, 11 x4 & 12 in full SC6, 7 & 10 in part KSF Core 1-6 Level 2/3 HWB in part G1 Level 2 in part

Next



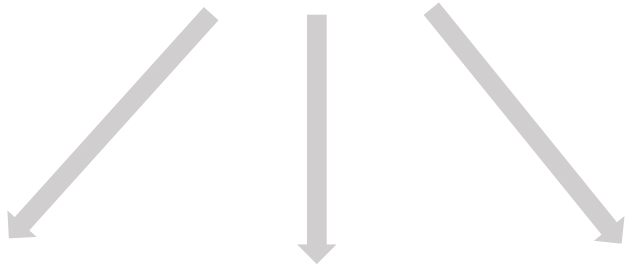


Start



Which band level are you?





Clinical Learning

Non-Clinical

Other Learning

Select your learning category

Close

Welcome

Band 5

Band 6

Band 7/8

Resources

Clinical Learning

Non-Clinical

Other Learning

- [Foundation MasterClass](#)
- [Parkinson's: Tailored Management Course](#)
- [Parkinson's Foundation Modules](#)
- [Understanding Parkinson's Online for Health and Social Care Staff](#)
- [Meeting The Specific Needs Of People With Parkinson's Disease And Their Carers](#)
- [Enhanced Parkinson's Disease Management](#)
- [A Map of Parkinson's](#)
- [Get It On Time – Parkinson's Medication](#)
- [Managing Bowel and Bladder Problems in Parkinson's](#)
- [Diet and Parkinson's Disease](#)
- [Good Practice in Commencing and Changing Parkinson's Medication Regimes](#)
- [Palliative Care MasterClass](#)
- [Lewy Body Dementia Bitesize](#)
- [Management and treatment of chronic sialorrhea \(drooling\) due to Parkinson's. \(Merz Therapeutics in partnership with Parkinson's UK\)](#)
- [Kinetics Film](#)

Next

Welcome

Band 5

Band 6

Band 7/8

Resources

Clinical Learning

Non-Clinical

Other Learning

Foundation MasterClass

Course provider: Neurology Academy

Price on application

Web page: [Find out more on Foundation MasterClass](#)

This course is designed for non-final year registrars, old age psychiatry registrars, Parkinson's nurses within the first 18 months of post, occupational therapists, speech and language therapists, pharmacists, clinical fellows and clinical lecturers. The course is set as one module over 2 days with one residential evening. The course will advance understanding of Parkinson's and related movement disorders taught through sessions.

Learning outcomes

You will come away from this course with an understanding of:

- Epidemiology, genetics, anatomy and basic pathophysiology of Parkinson's
- Differential diagnosis including clinical imaging
- Motor and non-motor symptoms
- Clinical skills, challenge tests and simple neurological examination
- Early treatment options
- Management of late-stage disease: drugs, invasive options, and surgery
- Management of non-motor symptoms
- Issues relating to inpatients with Parkinson's
- Neuropsychiatric complications
- Palliative care.

Neurophysiology

SC1, 4, 5, 9, 10, 13
SC11 x4 in part
KSF Core 1, 2 & 4 at Level 2/3
HWB in part
G1 Level 2 in part

Next

Welcome

Band 5

Band 6

Band 7/8

Resources

Clinical Learning

Non-Clinical

Other Learning

Parkinson's: Tailored Management Course

Course provider: Neurology Academy

Cost: £75 inc VAT

Web page: [Find out more on Parkinson's: Tailored Management Course](#)

This two-module course has been developed for anyone looking to develop an understanding of treating people with Parkinson's, or to refresh their knowledge and review their own practice.

From newly-qualified specialist nurses and junior doctors, to nurses or therapists who have been working in Parkinson's care for a while, this course will help broaden your understanding of how a person with Parkinson's might experience their condition, how they might experience their care, and how best we as healthcare professionals can support them to live as well as possible.

Next

Welcome

Band 5

Band 6

Band 7/8

Resources

Clinical Learning

Non-Clinical

Other Learning

Parkinson's Foundation Modules

Course provider: Parkinson's UK

Cost: Free

Duration: Approximately 10 hours

Web page: [Find out more on Parkinson's Foundation Modules](#)

This course is suitable for anyone working in health or social care who requires a foundation understanding of Parkinson's. It involves self-directed learning so you can work through the interactive learning units at a pace suitable to your needs. You can choose to complete the whole course or pick a combination of learning units. You can expect the full course to take a minimum of 10 hours learning.

Learning outcomes

By the end of this course you will understand:

- What Parkinson's is
- How Parkinson's is diagnosed
- The symptoms of Parkinson's
- Treatments available for the condition and their potential side effects
- What actions you can take to help make sure that every person with Parkinson's receives the best care possible.

Neurophysiology

SC1, 2, 5, 7, 11 x3 in full
SC6, 10 and 12 in part
KSF Core 1-6 Level 2
HWB in part
G1 Level 2 in part

Next

Welcome

Band 5

Band 6

Band 7/8

Resources

Clinical Learning

Non-Clinical

Other Learning

Understanding Parkinson's Online for Health and Social Care Staff

Course provider: Parkinson's UK

Cost: Free

Duration: 24 hours

Web page: [Find out more on Understanding Parkinson's Online for Health and Social Care Staff](#)

This course is suitable for anyone working in health or social care who requires an understanding of Parkinson's. It involves self-directed learning so you can work through the interactive learning units at a pace suitable to your needs. It takes approximately 24 hours to complete and covers a wide range of topics, helping you to understand Parkinson's better and provide top-quality care for people with the condition. You will have an opportunity to reflect on your practice and to connect with your peers.

Learning outcomes

Upon completion of every learning unit participants will understand:

- The common signs, symptoms and progression of Parkinson's
- The impact Parkinson's can have on the person with the condition and those around them
- The processes, procedures, methods, techniques and services used to manage Parkinson's
- The issues, side effects and related procedures commonly associated with Parkinson's medication
- The communication and cognitive challenges associated with Parkinson's, their impact and ways to deal with them.

Neurophysiology

SC1, 3, 5, 11 x4 and 12 in full
SC6, 7 and 10 in part
KSF Core 1-6 Level 2/3
HWB in part
G1 Level 2 in part

Next

Welcome

Band 5

Band 6

Band 7/8

Resources

Clinical Learning

Non-Clinical

Other Learning

Meeting The Specific Needs Of People With Parkinson's Disease And Their Carers, SHG311, FHEQ6

Course provider: Swansea University

Cost: Please contact us for course fees

Web page: [Find out more on Meeting The Specific Needs Of People With Parkinson's](#)

Contact: Tony Duffy, Swansea University a.w.duffy@Swansea.ac.uk;

Louise Ebenezer louise.Ebenezer@wales.nhs.uk

This is a two week taught module at degree and masters level. It can be studied as a stand-alone module or as part of a degree. This module will enable registered practitioners to practice competently as a member of the multi-disciplinary team within the specialist field of caring for people affected by Parkinson's. This is a very well recognised course, considered essential for all new or aspiring Parkinson's nurses.

Learning outcomes

By the end of this module you should be able to:

- Critically review the current concepts related to the pathophysiology and epidemiology of Parkinson's
- Critically review the range of treatments available for the management of Parkinson's
- Provide a range of treatments, monitor their effectiveness and take appropriate actions to maintain patient comfort
- Critically discuss the role of the PDNS in the management of Parkinson's-related conditions
- Contribute further to the co-ordination and collaboration of the multidisciplinary team
- Critically analyse the psychosocial and cultural factors which may influence the delivery of care to people with Parkinson's and their carers and families
- Critically analyse the application of theory for practice in a variety of situations within the context of caring for people with Parkinson's and their carers, utilising an integrated MDT approach
- Critically assess available strategies with informed, flexible and innovative approaches to meeting the specific needs of an individual with Parkinson's
- Demonstrate an enquiring approach to this specialist area of practice through reflection, discussion and dissemination of acquired skills and knowledge underpinning practice.

General & Neurophysiology

SC1-8, 11 x1, 13
KSF Core 1 Level 2
HWB in part

Next

Welcome

Band 5

Band 6

Band 7/8

Resources

Clinical Learning

Non-Clinical

Other Learning

Enhanced Parkinson's Disease Management

Course provider: Plymouth University

Cost: Check with provider

Web page: [Find out more on Enhanced Parkinson's Disease Management](#)

General & Neurophysiology

SC1, 2, 3, 4, 5, 6, 7, 8, 9, 10, 11
x4, 12, 13
KSF Core 1-6 Level 2
HWB in part

This course is currently not running, plans are underway to continue to deliver, please check back later.

This 40 credit degree-level module enables you to become competent in assessing, planning, delivering, evaluating and leading the care of people with Parkinson's, and to give support and advice to their carers. You will develop an enquiring mind for leading and influencing change in Parkinson's services. With subject-specific knowledge and skill, you will be able to promote high quality care within the clinical setting through dissemination of evidence-based information. The course is normally planned to run over a 6 month period. Delivery consists of keynote lectures, group work, expert patient, student-led activities, digital media and blended learning.

Learning outcomes

By the end of this course you will be expected to be able to:

- Demonstrate a significant knowledge and critical understanding of the physical and psychosocial implications of Parkinson's for individuals and their carers
- Systematically assess, plan, implement and critically evaluate the care of the Parkinson's patients and their carers
- Lead and work effectively and collaboratively to meet the needs of the individual client and demonstrate leadership to ensure high-quality, effective management of patients
- Systematically apply an in-depth knowledge of the pathophysiology of Parkinson's and analysis of its pharmacological management and use this to support the learning of others
- Critically apply relevant evidence to support care management and service development
- Identify, discuss and apply political and professional issues related to this area of healthcare.

Next

Welcome

Band 5

Band 6

Band 7/8

Resources

Clinical Learning

Non-Clinical

Other Learning

Non-Medical Prescribing

Course provider: Northumbria University

Cost: Check with provider

Web page: [Find out more on Non-Medical Prescribing](#)

The Non Medical Prescribing module consists of 38 days of prescribing preparation which includes:

- 10 taught days (and 0.5 day for assessment),
- 10 directed learning days,
- 5.5 days independent study and
- 12 days of supervised practice with assessment over approximately 22 weeks (5 months). In addition, students will require personal study time. The amount of time varies greatly between individuals but can be in the region of 80 - 190 hours

The module can be studied at level 6 (degree) or at level 7 (masters).

Learning Outcomes

By the end of the module you will be able to:

- Appraise and interpret the legal, ethical and professional frameworks for accountability and responsibility for prescribing within your own sphere of practice
- Evaluate evidence to support your prescribing decisions
- Summarise the pharmacokinetic and pharmacodynamic actions relating to products used within your sphere of practice
- Demonstrate professional skills in consultation, decision making and prescribing safely and effectively
- Employ partnership approaches with patients/carers to monitor and review treatment, manage/report adverse drug reactions
- Critique prescribing practice and support others to prescribe safely and effectively as part of a multi-disciplinary team

Next

Welcome

Band 5

Band 6

Band 7/8

Resources

Clinical Learning

Non-Clinical

Other Learning

A Map of Parkinson's

Course provider: Phoenix-Aragon Education

Cost: Price on application

Web page: [Find out more on A Map of Parkinson's](#)

What will you learn?

You will study around 50 symptoms associated with Parkinson's, separated into the following 8 modules:

- introduction (free)
- pain and fatigue
- impacts of Parkinson's on personal and public life
- cognition, perception and motivation
- sleep and night-time issues
- motor symptoms
- neuropsychiatric symptoms
- autonomic, gastrointestinal and sensory symptoms

How does it work?

The course has been designed to be studied at your own pace online or offline.

The introductory module is free, and you can get the course at a reduced price of £44 by registering with an email address before starting this introductory module.

The course includes links to further online materials, such as information sheets, peer-reviewed articles, online seminar recordings, video clips, podcasts and other resources.

You can complete this course within a few weeks if you have plenty of study time, otherwise short sessions at regular intervals will take a few months.

On completion of the course you can download and print a record of completion showing total time spent engaged with the 8 modules

Next

Welcome

Band 5

Band 6

Band 7/8

Resources

Clinical Learning

Non-Clinical

Other Learning

Get It On Time – Parkinson's Medication

Course provider: Parkinson's UK/Lancashire Teaching Hospitals NHS Foundation Trust

Cost: Free

Web page: [Find out more on Get It On Time - Parkinson's Medication](#)

How does it work?

You will be able to read, watch and listen to multimedia and interactive resources on Parkinson's and the importance of medication timing in hospitals. You will then take an assessment (multiple choice quiz) to demonstrate what you have learnt.

A certificate is available to download once you have passed the assessment, which gives 1 CPD point. The course and assessment should take between 1 and 2 hours to complete.

What will participants learn?

The course focuses on the following areas:

- What is Parkinson's?
- The symptoms of Parkinson's.
- Treatments for Parkinson's.
- Why medicine should be given on time.

These will enable participants to:

- recognise and appreciate key Parkinson's symptoms
- improve their practice in caring for people with Parkinson's
- improve their practice in the management of Parkinson's
- understand why it is vital that Parkinson's medication is given on time

Participants will finish the course with a good overview of Parkinson's and the knowledge to support improvement of their practice and that of their colleagues.

Next

Welcome

Band 5

Band 6

Band 7/8

Resources

Clinical Learning

Non-Clinical

Other Learning

Managing Bowel and Bladder Problems in Parkinson's

Course provider: Parkinson's Academy

Cost: Free Webinar

Web page: [Find out more on Managing Bowel and Bladder Problems in Parkinson's](#)

What does the data tell us about the need for early intervention in bladder and bowel complication's in Parkinson's and what is your role both in primary and secondary care to ensure best outcomes for your patients.

Join the panel to learn about this important aspect of Parkinson's management.

Session recording available on YouTube and slides available on website.

Next

Welcome

Band 5

Band 6

Band 7/8

Resources

Clinical Learning

Non-Clinical

Other Learning

Diet and Parkinson's Disease

Course provider: Parkinson's Academy

Cost: Free Webinar

Web page: [Find out more on Diet and Parkinson's Disease](#)

This recorded webinar will cover:

- Constipation
- Dehydration
- Gastroparesis
- Vitamin D
- Protein

Session recording available on YouTube and slides available on website.

Next

Welcome

Band 5

Band 6

Band 7/8

Resources

Clinical Learning

Non-Clinical

Other Learning

Good Practice in Commencing and Changing Parkinson's Medication Regimes

Course provider: Parkinson's Academy

Cost: Free Webinar

Web page: [Find out more on Good Practice in Commencing and Changing Parkinson's Medication Regimes](#)

Online webinar will cover:

- Getting started
- Person-centered care
- Communication
- Signposting
- Changing therapy

Session recording available on YouTube and slides available on website.

Next

Welcome

Band 5

Band 6

Band 7/8

Resources

Clinical Learning

Non-Clinical

Other Learning

Palliative Care MasterClass

Course provider: Parkinson's Academy

Cost: Contact provider

Web page: [Find out more on Palliative Care MasterClass](#)

This MasterClass is aimed at health professionals involved in palliative care for neurological conditions largely focused on Parkinson's and dementia – including allied health professionals, doctors (grade SpR and above), specialist nurses, community teams and GPs.

Learning outcomes

Learners will come away from this course with an understanding of:

- Specific unmet palliative care needs in Parkinson's, dementia, MS and MND
- Palliative assessment tools
- Disease-specific issues faced by patients
- Commonly encountered medications and their side effects
- Terminal stages – particularly how to identify and manage drug therapies in final days
- Service considerations and delivery
- Promoting autonomy – how and when to consider ACP in the context of cognitive impairment
- Examples of good practice, discussion of how such practice could be spread and incorporated elsewhere
- Future directions and research, quality improvement opportunities.

Palliative Care

SC1, 2, 4-11 in part
KSF Core 1-6 Level 2/3
HWB in part
G1 Level 2 in part

Close

Welcome

Band 5

Band 6

Band 7/8

Resources

Clinical Learning

Non-Clinical

Other Learning

Lewy Body Dementia Bitesize

Course provider: Lewy Body Academy/Neurology Academy

Cost: Free

Duration: Up to 15 minutes each

Web page: [Find out more on Lewy Body Dementia Bitesize](#)

This course is perfect for anyone working in neurology, medicine for the elderly or old age psychiatry. The course is also useful for therapists, those in nursing roles in hospital or the community, and could provide helpful baseline knowledge for those in general practice.

Learning outcomes

Our Lewy Body Bitesize course is intended for anyone looking to develop a basic understanding of Lewy body dementia:

- what it looks like and how to diagnose it
- effective management across different types of symptoms
- future treatment opportunities.

Close

Welcome

Band 5

Band 6

Band 7/8

Resources

Clinical Learning

Non-Clinical

Other Learning

Management and treatment of chronic sialorrhea (drooling) due to Parkinson's. (Merz Therapeutics in partnership with Parkinson's UK)

Course provider: Parkinson's UK

Cost: Free

Duration: 2 hours

Web page: [Find out more on Management and treatment of chronic sialorrhea \(drooling\) due to Parkinson's](#)

An online course examining the management and treatment of chronic sialorrhea in Parkinson's. This educational module has been initiated and funded by Merz therapeutics.

Learning outcomes

The course focuses on the following areas:

- What is sialorrhea?
- Impact of sialorrhea
- Assessing and managing chronic drooling
- Botulinum neurotoxin type A injections

Close

Welcome

Band 5

Band 6

Band 7/8

Resources

Clinical Learning

Non-Clinical

Other Learning

Kinetics Film

Course provider: DT2 Productions

Cost: Free

Duration: 1 hour

Web page: [Find out more on Kinetics Film](#)

Kinetics is based on the true story of Sue Wylie's journey to being diagnosed with Parkinson's, the impact on her everyday life and acceptance of living with Parkinson's.

This resource is suitable for all health and social care professionals.

Close

Welcome

Band 5

Band 6

Band 7/8

Resources

Clinical Learning

Non-Clinical

Other Learning

- [Parkinson's: train the trainer \(Excellence Network\)](#)

Next

Welcome

Band 5

Band 6

Band 7/8

Resources

Clinical Learning

Non-Clinical

Other Learning

Parkinson's: train the trainer

Course provider: Parkinson's UK

Cost: Free

Duration: 14 hours

Web page: [Find out more on Parkinson's: train the trainer](#)

This course is for experienced health and social care trainers who want to learn how to deliver a 3 hour course on Parkinson's to their colleagues (you can deliver the course in more than one session if required). In order to become a UK Parkinson's Excellence Network trained trainer you need to complete 2 courses and attend a webinar. The first course provides the background knowledge and understanding of Parkinson's. Once you've completed and passed this, you can access the second course which teaches you how to deliver the Parkinson's Explained presentation. You'll then be able to deliver this at your place of work, fully endorsed by PDNSA. You'll also receive a full training pack, allowing you to start delivering the training immediately.

Learning outcomes

By the end of this course, participants will:

- Understand the impact of Parkinson's, including motor and non-motor symptoms, communication and cognition issues, and management of Parkinson's
- Evaluate your own practice and care of people with Parkinson's
- Deliver the Parkinson's Explained training session to your staff
- Recognise the role of the UK Parkinson's Excellence Network and how you can work with us.

Delivering & Planning Education

SC1, 3, 5-10, 11 x4, 12
KSF Core 1-6 in part Level 2/3
HWB in part
G1 Level 1

Next

Welcome

Band 5

Band 6

Band 7/8

Resources

Clinical Learning

Non-Clinical

Other Learning

- [Good Brain, Bad Brain](#)
- [Introduction to Clinical Research \(NIHR Learn\)](#)
- [Get it on Time – for staff who don't administer](#)
- [Mental health professionals - what you need to know about Parkinson's](#)
- [Pharmacists - what you need to know about Parkinson's](#)

Next

Welcome

Band 5

Band 6

Band 7/8

Resources

Clinical Learning

Non-Clinical

Other Learning

Good Brain, Bad Brain (FutureLearn)

Course provider: FutureLearn, University of Birmingham

Cost: Free

Duration: 3 weeks, 3 hours per week

Web page: [Find out more on Good Brain, Bad Brain](#)

This free online course is designed for any professional with an interest in finding out more about the fundamentals of Parkinson's.

It looks at how Parkinson's affects people, what causes it, and how symptoms might be improved. It also looks at what there is still to learn about the condition.

Close

Welcome

Band 5

Band 6

Band 7/8

Resources

Clinical Learning

Non-Clinical

Other Learning

Introduction to Clinical Research (National Institute for Health Research)

Course provider: National Institute for Health Research

Cost: Free

Duration: 2 hours 40 minutes

Web page: [Find out more on Introduction to Clinical Research](#)

A free online course, created by the National Institute for Health Research (NIHR), providing an overview of different types of research and the clinical research process. Suitable for anyone wanting to know more about how research trials are carried out, to increase their confidence in talking to patients about research or starting a career in research. This is a self-directed learning course and does not contain any assessment. You can log in at any time and work through the course at a pace that suits you.

Learning outcomes

Upon completing this course you should be able to:

- Identify different types of research
- Understand the research process
- Recall information about clinical trial phases
- Understand clinical research terms such as blinding and placebos
- The course also covers an introduction to study set-up and conduct, data quality and management, and research regulation and governance.

Close

Welcome

Band 5

Band 6

Band 7/8

Resources

Clinical Learning

Non-Clinical

Other Learning

Get It On Time – Parkinson's medication for staff who don't administer (Excellence Network)

Course provider: Parkinson's UK

Cost: Free

Duration: 1 hour minimum

Web page: [Find out more on Get It On Time – Parkinson's medication for staff who don't administer](#)

The course focuses on the importance of Parkinson's medications being given on time, with a particular focus for staff who don't administer medications.

Learning outcomes

The course focuses on the following areas:

- What is Parkinson's?
- The symptoms of Parkinson's.
- Treatments for Parkinson's.
- Why medicine should be given on time.

These will enable participants to:

- recognise and appreciate key Parkinson's symptoms
- improve their practice in caring for people with Parkinson's
- understand why it is vital that Parkinson's medication is given on time

Close

Welcome

Band 5

Band 6

Band 7/8

Resources

Clinical Learning

Non-Clinical

Other Learning

Mental health professionals – what you need to know about Parkinson's

Course provider: Parkinson's UK

Cost: Free

Duration: 15 Minutes

Web page: [Find out more on Mental health professionals – what you need to know about Parkinson's](#)

This 15-minute course provides a background to understanding Parkinson's and discusses the mental health specific aspects of the condition that are of direct relevance to professionals working in mental health services. This course has been developed to assist mental health professionals in continuing to support people with Parkinson's, as effectively as possible.

Learning outcomes

The course covers the following areas:

- What Parkinson's is
- The impact of a diagnosis
- Common psychological difficulties associated with Parkinson's

By the end of the course you should be able to:

- Have a better understanding of Parkinson's and its common motor and non-motor symptoms. Teach cognitive strategies for non-motor symptoms of Parkinson's
- Recognise that psychological difficulties experienced by people with Parkinson's are a complex interplay between neurobiological, psychological and social factors
- Recognise and understand the ways in which people's mental health is impacted following a Parkinson's diagnosis
- Understand more about the ways in which Parkinson's symptoms and mental health can interact and create patterns of "stuckness"

Close

Welcome

Band 5

Band 6

Band 7/8

Resources

Clinical Learning

Non-Clinical

Other Learning

Pharmacists - what you need to know about Parkinson's

Provider: Parkinson's UK

Cost: Free

Web page: [Find out more on Pharmacists - what you need to know about Parkinson's](#)

This 15- minute course provides a background to understanding Parkinson's and discusses specific aspects of the condition that are of direct relevance to pharmacists. This course has been developed to assist pharmacists in continuing to support people with Parkinson's, as effectively as possible.

What will participants learn?

The course covers the following areas:

- What Parkinson's is
- Common symptoms
- Drug therapy for Parkinson's
- Medication side effects

By the end of the course you will have:

- Knowledge of the common symptoms of Parkinson's (both motor and non-motor)
- An understanding of some of the challenges and side effects associated with drug therapy for Parkinson's
- An awareness of opportunities for further support

Close

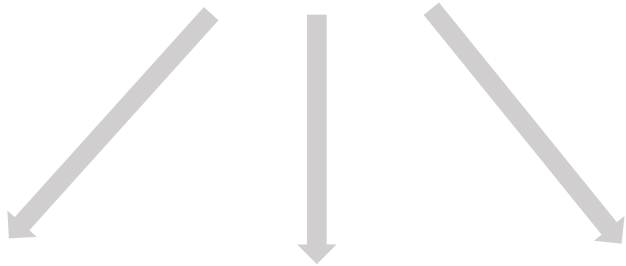
Welcome

Band 5

Band 6

Band 7/8

Resources



Clinical Learning

Non-Clinical

Other Learning

Select your learning category

Close

Welcome

Band 5

Band 6

Band 7/8

Resources

Clinical Learning

Non-Clinical

Other Learning

- [The Nursing Management of Parkinson's Disease Related Conditions \(MPEC\)](#)
- [Enhanced Parkinson's Disease Management \(Plymouth University\)](#)
- [Parkinson's: Managing Bone Health and Fracture Risk](#)
- [Foundation Masterclass \(Parkinson's Academy\)](#)
- [Parkinson's: Managing Palliative and End of Life Care](#)
- [Palliative Care MasterClass](#)
- [Non-Medical Prescribing Programme](#)
- [A Map of Parkinson's](#)
- [Get It On Time – Parkinson's Medication](#)
- [Managing Bowel and Bladder Problems in Parkinson's](#)
- [Diet and Parkinson's Disease](#)
- [Good Practice in Commencing and Changing Parkinson's Medication Regimes](#)
- [Advanced MasterClass](#)
- [Lewy Body Dementia Bitesize](#)
- [Management and treatment of chronic sialorrhea \(drooling\) due to Parkinson's. \(Merz Therapeutics in partnership with Parkinson's UK\)](#)
- [Kinetics Film](#)

Next

Welcome

Band 5

Band 6

Band 7/8

Resources

Clinical Learning

Non-Clinical

Other Learning

Meeting The Specific Needs Of People With Parkinson's Disease And Their Carers, SHG311, FHEQ6

Course provider: Swansea University

Cost: Please contact us for course fees

Web page: [Find out more on Meeting The Specific Needs Of People With Parkinson's Disease And Their Carers](#)

Contact: Tony Duffy, Swansea University a.w.duffy@Swansea.ac.uk;
Louise Ebenezer louise.Ebenezer@wales.nhs.uk

This is a two week taught module at degree and masters level. It can be studied as a stand-alone module or as part of a degree. This module will enable registered practitioners to practice competently as a member of the multi-disciplinary team within the specialist field of caring for people affected by Parkinson's. This is a very well recognised course, considered essential for all new or aspiring Parkinson's nurses.

Learning outcomes

By the end of this module you should be able to:

- Critically review the current concepts related to the pathophysiology and epidemiology of Parkinson's
- Critically review the range of treatments available for the management of Parkinson's
- Provide a range of treatments, monitor their effectiveness and take appropriate actions to maintain patient comfort
- Critically discuss the role of the PDNS in the management of Parkinson's-related conditions
- Contribute further to the co-ordination and collaboration of the multidisciplinary team
- Critically analyse the psychosocial and cultural factors which may influence the delivery of care to people with Parkinson's and their carers and families
- Critically analyse the application of theory for practice in a variety of situations within the context of caring for people with Parkinson's and their carers, utilising an integrated MDT approach
- Critically assess available strategies with informed, flexible and innovative approaches to meeting the specific needs of an individual with Parkinson's
- Demonstrate an enquiring approach to this specialist area of practice through reflection, discussion and dissemination of acquired skills and knowledge underpinning practice.

General & Neurophysiology

SC1-8, 11 x1, 13
KSF Core 1 Level 2
HWB in part

Welcome

Band 5

Band 6

Band 7/8

Resources

Next

Clinical Learning

Non-Clinical

Other Learning

Enhanced Parkinson's Disease Management

Course provider: Cornwall Partnership NHS Foundation Trust and Plymouth University

Cost: Check with provider

Web page: [Find out more on Enhanced Parkinson's Disease Management](#)

General & Neurophysiology

SC1, 2, 3, 4, 5, 6, 7, 8, 9, 10, 11 x4,
12, 13
KSF Core 1-6 Level 2
HWB in part

This course is currently not running, plans are underway to continue to deliver, please check back later.

This 40 credit degree-level module enables you to become competent in assessing, planning, delivering, evaluating and leading the care of people with Parkinson's, and to give support and advice to their carers. You will develop an enquiring mind for leading and influencing change in Parkinson's services. With subject-specific knowledge and skill, you will be able to promote high-quality care within the clinical setting through dissemination of evidence-based information.

This course is normally planned to run over a 6 month period. Delivery consists of keynote lectures, group work, expert patient, student-led activities, digital media and blended learning.

Learning outcomes

At the end of the module the learner will be expected to be able to:

- Demonstrate a significant knowledge and critical understanding of the physical and psychosocial implications of Parkinson's for individuals and their carers
- Systematically assess, plan, implement and critically evaluate the care of the Parkinson's patients and their carers
- Lead and work effectively and collaboratively to meet the needs of the individual client and demonstrate leadership to ensure high-quality, effective management of Parkinson's
- Systematically apply an in-depth knowledge of the pathophysiology of Parkinson's and analysis of its pharmacological management and use this to support the learning of others
- Critically apply relevant evidence to support care management and service development
- Identify, discuss and apply political and professional issues related to this area of healthcare.

Next

Welcome

Band 5

Band 6

Band 7/8

Resources

Clinical Learning

Non-Clinical

Other Learning

Parkinson's: Managing Bone Health and Fracture Risk

Course provider: Parkinson's UK and the Open University

Cost: Free

Web page: [Find out more on Parkinson's: Managing Bone Health and Fracture Risk](#)

Bone Health

SC2, 3, 6, 11(b) in full
SC1, 4, 5, 7, 9, 10, 11(c), 11(d), 12
in part
KSF Core 1-6 Level 2/3
HWB in part
G1 Level 2 in part

This course has been designed for professionals, such as Parkinson's specialist nurses and other clinicians, who provide clinical input for people with Parkinson's in outpatient and inpatient settings. Its purpose is to enhance your understanding and recognition of bone health issues in Parkinson's and to guide you in assessing and managing the increased fracture risks associated with the condition. The course aims to improve your confidence in identifying factors which impact on falls risk, to teach you about the structure and metabolism of bone, to explain the reasons why bone may be more vulnerable to fracture in Parkinson's and to outline the options for reducing fracture risk through medication and lifestyle. This course will take no more than 10 hours to study, and on successful completion you will gain the Parkinson's: Managing Bone Health and Fracture Risk digital badge.

Learning outcomes

- Understand the importance of falls and fracture prevention in Parkinson's
- Determine the general and Parkinson's-specific risk factors that can lead to falls
- Understand the consequences of a fall, particularly the sequelae of hip fracture
- Understand the nature of osteoporosis, and identify the particular contributors to osteoporosis in Parkinson's
- Use FRAX and QFracture risk assessment tools appropriately to determine osteoporosis risk in Parkinson's
- Interpret osteoporosis risk within the current NOGG treatment guidance and understand the limitations of this guidance in Parkinson's
- Devise a management plan for a person with Parkinson's according to a provided algorithm.

Next

Welcome

Band 5

Band 6

Band 7/8

Resources

Clinical Learning

Non-Clinical

Other Learning

Foundation Masterclass (Parkinson's Academy)

Course provider: Neurology Academy

Price on application

Web page: [Find out more on Foundation Masterclass](#)

This course is designed for non-final year registrars, old age psychiatry registrars, Parkinson's nurses within the first 18 months of post, occupational therapists, speech and language therapists, pharmacists, clinical fellows and clinical lecturers. The course is set as one module over 2 days with one residential evening. The course will advance understanding of Parkinson's and related movement disorders taught through sessions.

Learning outcomes

You will come away from this course with an understanding of:

- Epidemiology, genetics, anatomy and basic pathophysiology of Parkinson's
- Differential diagnosis including clinical imaging
- Motor and non-motor symptoms
- Clinical skills, challenge tests and simple neurological examination
- Early treatment options
- Management of late-stage disease: drugs, invasive options, and surgery
- Management of non-motor symptoms
- Issues relating to inpatients with Parkinson's
- Neuropsychiatric complications
- Palliative care.

Neurophysiology

SC1, 4, 5, 9, 10, 13
SC11 x4 in part
KSF Core 1, 2 & 4 at Level 2/3
HWB in part
G1 Level 2 in part

Next

Welcome

Band 5

Band 6

Band 7/8

Resources

Clinical Learning

Non-Clinical

Other Learning

Parkinson's: Managing Palliative and End of Life Care

Course provider: Parkinson's UK and Open University

Cost: Free

Web page: [Find out more on Parkinson's: Managing Palliative and End of Life Care](#)

Created by Parkinson's UK and the Open University online, this course takes approximately 10 hours to complete. It has been designed for professionals, such as Parkinson's specialist nurses and other clinicians, who work as part of the specialist team during the palliative and end-of-life phases. It may also be useful for health and social care professionals who already have experience of working with people with Parkinson's, but wish to enhance their knowledge of palliative and end of life care in Parkinson's.

Learning outcomes

Having completed the course, participants will be able to:

- Demonstrate an understanding of the principles of palliative and end of life care and how these can be applied in Parkinson's
- Identify the challenges in practice of applying palliative and end of life care principles in Parkinson's
- Confidently discuss the theory of advance care planning and the issues involved, such as power of attorney or advance decision to refuse treatment
- Identify symptoms which indicate the end of life phase in Parkinson's and highlight the issues in management of this phase
- Be aware of the family/carers of the client and their needs throughout the end of life phase through to bereavement.

Palliative Care

SC1, 5, 6, 7, 9, 10, 11(b), 11(d),
12 in part
KSF Core 1-6 Level 2/3
HWB in part
G1 Level 2 in part

Next

Welcome

Band 5

Band 6

Band 7/8

Resources

Clinical Learning

Non-Clinical

Other Learning

Palliative Care MasterClass

Course provider: Parkinson's Academy

Cost: Contact provider

Web page: [Find out more on Palliative Care MasterClass](#)

This MasterClass is aimed at health professionals involved in palliative care for neurological conditions largely focused on Parkinson's and dementia – including allied health professionals, doctors (grade SpR and above), specialist nurses, community teams and GPs.

Learning outcomes

Learners will come away from this course with an understanding of:

- Specific unmet palliative care needs in Parkinson's, dementia, MS and MND
- Palliative assessment tools
- Disease-specific issues faced by patients
- Commonly encountered medications and their side effects
- Terminal stages – particularly how to identify and manage drug therapies in final days
- Service considerations and delivery
- Promoting autonomy – how and when to consider ACP in the context of cognitive impairment
- Examples of good practice, discussion of how such practice could be spread and incorporated elsewhere
- Future directions and research, quality improvement opportunities.

Palliative Care

SC1, 2, 4-11 in part
KSF Core 1-6 Level 2/3
HWB in part
G1 Level 2 in part

Next

Welcome

Band 5

Band 6

Band 7/8

Resources

Clinical Learning

Non-Clinical

Other Learning

Non-Medical Prescribing Programme

Course provider: University of Northampton

Cost: Full time (40 credits) Part time (20 credits) available on enquiry
(Funding for these modules may be available)

Web page: [Find out more on Non-Medical Prescribing Programme](#)

Contact: julie.holloway@northampton.ac.uk

This 40-credit module will enable autonomous nurse/midwife practitioners and AHPs to demonstrate safe prescribing practice within their own scope of practice. On successful completion practitioners will gain academic accreditation and advanced skills required to prescribe safely in line with current professional regulation and thus will be eligible to record the qualification Independent & Supplementary Prescriber with the Nursing and Midwifery Council (NMC) and the HCPC.

This is a professional qualification and can be undertaken as a stand-alone module or as part of a package of modules which together can build to an MSc Advanced Clinical Practice or MSc Advancing Practice.

Prescribing

SC2, 4, 5, 6, 7 in part
KSF Core 1-6 Level 2/3
HWB in part
G1 Level 2 in part

Next

Welcome

Band 5

Band 6

Band 7/8

Resources

Clinical Learning

Non-Clinical

Other Learning

A Map of Parkinson's

Course provider: Phoenix-Aragon Education

Cost: Price on application

Web page: [Find out more on A Map of Parkinson's](#)

What will you learn?

You will study around 50 symptoms associated with Parkinson's, separated into the following 8 modules:

- introduction (free)
- pain and fatigue
- impacts of Parkinson's on personal and public life
- cognition, perception and motivation
- sleep and night-time issues
- motor symptoms
- neuropsychiatric symptoms
- autonomic, gastrointestinal and sensory symptoms

How does it work?

The course has been designed to be studied at your own pace online or offline.

The introductory module is free, and you can get the course at a reduced price of £44 by registering with an email address before starting this introductory module.

The course includes links to further online materials, such as information sheets, peer-reviewed articles, online seminar recordings, video clips, podcasts and other resources.

You can complete this course within a few weeks if you have plenty of study time, otherwise short sessions at regular intervals will take a few months.

On completion of the course you can download and print a record of completion showing total time spent engaged with the 8 modules

Next

Welcome

Band 5

Band 6

Band 7/8

Resources

Clinical Learning

Non-Clinical

Other Learning

Get It On Time – Parkinson's Medication

Course provider: Parkinson's UK/Lancashire Teaching Hospitals NHS Foundation Trust

Cost: Free

Web page: [Find out more on Get It On Time – Parkinson's Medication](#)

How does it work?

You will be able to read, watch and listen to multimedia and interactive resources on Parkinson's and the importance of medication timing in hospitals. You will then take an assessment (multiple choice quiz) to demonstrate what you have learnt.

A certificate is available to download once you have passed the assessment, which gives 1 CPD point. The course and assessment should take between 1 and 2 hours to complete.

What will participants learn?

The course focuses on the following areas:

- What is Parkinson's?
- The symptoms of Parkinson's.
- Treatments for Parkinson's.
- Why medicine should be given on time.

These will enable participants to:

- recognise and appreciate key Parkinson's symptoms
- improve their practice in caring for people with Parkinson's
- improve their practice in the management of Parkinson's
- understand why it is vital that Parkinson's medication is given on time

Participants will finish the course with a good overview of Parkinson's and the knowledge to support improvement of their practice and that of their colleagues.

Next

Welcome

Band 5

Band 6

Band 7/8

Resources

Clinical Learning

Non-Clinical

Other Learning

Managing Bowel and Bladder Problems in Parkinson's

Course provider: Parkinson's Academy

Cost: Free Webinar

Web page: [Find out more on Managing Bowel and Bladder Problems in Parkinson's](#)

What does the data tell us about the need for early intervention in bladder and bowel complication's in Parkinson's and what is your role both in primary and secondary care to ensure best outcomes for your patients.

Join the panel to learn about this important aspect of Parkinson's management.

Session recording available on YouTube and slides available on website.

Next

Welcome

Band 5

Band 6

Band 7/8

Resources

Clinical Learning

Non-Clinical

Other Learning

Diet and Parkinson's Disease

Course provider: Parkinson's Academy

Cost: Free Webinar

Web page: [Find out more on Diet and Parkinson's Disease](#)

This recorded webinar will cover:

- Constipation
- Dehydration
- Gastroparesis
- Vitamin D
- Protein

Session recording available on YouTube and slides available on website.

Next

Welcome

Band 5

Band 6

Band 7/8

Resources

Clinical Learning

Non-Clinical

Other Learning

Good Practice in Commencing and Changing Parkinson's Medication Regimes

Course provider: Parkinson's Academy

Cost: Free Webinar

Web page: [Find out more on Good Practice in Commencing and Changing Parkinson's Medication Regimes](#)

Online webinar will cover:

- Getting started
- Person-centred care
- Communication
- Signposting
- Changing therapy

Session recording available on YouTube and slides available on website.

Next

Welcome

Band 5

Band 6

Band 7/8

Resources

Clinical Learning

Non-Clinical

Other Learning

Advanced MasterClass (Parkinson's Academy)

Course provider: Parkinson's Academy

Price on application

Web page: [Find out more on Advanced MasterClass](#)

Neurophysiology

SC1, 2, 3, 4, 5, 6, 8, 9, 10, 11
x3, 13
KSF Core 1-6 Level 2/3
HWB in part

This course is designed for consultants, experienced Parkinson's nurses, final year registrars, final year old age psychiatry registrars, GPwSIs, experienced neurosciences pharmacists, associate specialists and staff grade physicians. The course will advance understanding of Parkinson's and related movement disorders through taught sessions and mentorship (a mentor will be appointed for each participant). The 2 Advanced Masterclass modules are approved by the Federation of the Royal Colleges of Physicians of the United Kingdom for 27 category 1 (external) CPD credits.

Learning outcomes

Learners will come away from this course with an understanding of:

- Basic pathology, anatomy, genetics and neurophysiology of Parkinson's
- The basics of building a Parkinson's service
- Differential diagnosis
- The principles of 'giving' of the diagnosis to patients and carers
- Early treatment options
- Practical aspects of the management of dementia, depression, anxiety and psychosis in Parkinson's
- Non-motor issues
- Drug management in complex disease
- Transition from complex to palliative care
- Surgical procedures, selection, suitability and practical aspects
- Current evidence for practice.

Close

Welcome

Band 5

Band 6

Band 7/8

Resources

Clinical Learning

Non-Clinical

Other Learning

Lewy Body Dementia Bitesize

Course provider: Lewy Body Academy/Neurology Academy

Cost: Free

Duration: Up to 15 minutes each

Web page: [Find out more on Lewy Body Dementia Bitesize](#)

This course is perfect for anyone working in neurology, medicine for the elderly or old age psychiatry. The course is also useful for therapists, those in nursing roles in hospital or the community, and could provide helpful baseline knowledge for those in general practice.

Learning outcomes

Our Lewy Body Bitesize course is intended for anyone looking to develop a basic understanding of Lewy body dementia:

- what it looks like and how to diagnose it
- effective management across different types of symptoms
- future treatment opportunities.

Close

Welcome

Band 5

Band 6

Band 7/8

Resources

Clinical Learning

Non-Clinical

Other Learning

Management and treatment of chronic sialorrhea (drooling) due to Parkinson's. (Merz Therapeutics in partnership with Parkinson's UK)

Course provider: Parkinson's UK

Cost: Free

Duration: 2 hours

Web page: [Find out more on Management and treatment of chronic sialorrhea \(drooling\) due to Parkinson's](#)

An online course examining the management and treatment of chronic sialorrhea in Parkinson's. This educational module has been initiated and funded by Merz therapeutics.

Learning outcomes

The course focuses on the following areas:

- What is sialorrhea?
- Impact of sialorrhea
- Assessing and managing chronic drooling
- Botulinum neurotoxin type A injections

Close

Welcome

Band 5

Band 6

Band 7/8

Resources

Clinical Learning

Non-Clinical

Other Learning

Kinetics Film

Course provider: DT2 Productions

Cost: Free

Duration: 1 hour

Web page: [Find out more on Kinetics Film](#)

Kinetics is based on the true story of Sue Wylie's journey to being diagnosed with Parkinson's, the impact on her everyday life and acceptance of living with Parkinson's.

This resource is suitable for all health and social care professionals.

Close

Welcome

Band 5

Band 6

Band 7/8

Resources

Clinical Learning

Non-Clinical

Other Learning

- [Parkinson's: train the trainer \(Excellence Network\)](#)

Next

Welcome

Band 5

Band 6

Band 7/8

Resources

Clinical Learning

Non-Clinical

Other Learning

Parkinson's: train the trainer

Course provider: Parkinson's UK

Cost: Free

Duration: 14 hours

Web page: [Find out more on Parkinson's: train the trainer](#)

This course is for experienced health and social care trainers who want to learn how to deliver a 3 hour course on Parkinson's to their colleagues (you can deliver the course in more than one session if required).

In order to become a UK Parkinson's Excellence Network trained trainer you need to complete 2 courses and attend a webinar. The first course provides the background knowledge and understanding of Parkinson's. Once you've completed and passed this, you can access the second course which teaches you how to deliver the Parkinson's Explained session at your place of work, fully endorsed by PDNSA. You'll also receive a full training pack, allowing you to start delivering the training immediately.

Learning outcomes

By the end of this course you will:

- Understand the impact of Parkinson's, including motor and non-motor symptoms, communication and cognition issues, and management of Parkinson's
- Evaluate your own practice and care of people with Parkinson's
- Deliver the Parkinson's Explained training session to your staff
- Recognise the role of the UK Parkinson's Excellence Network and how you can work with us.

Delivering & Planning Education

SC1, 3, 5-10, 11 x4, 12
KSF Core 1-6 in part Level 2/3
HWB in part
G1 Level 1

Welcome

Band 5

Band 6

Band 7/8

Resources

Close

Clinical Learning

Non-Clinical

Other Learning

- [Introduction to Clinical Research \(NIHR Learn\)](#)
- [Get it on Time – for staff who don't administer](#)
- [Mental health professionals - what you need to know about Parkinson's](#)
- [Pharmacists - what you need to know about Parkinson's](#)

Close

Welcome

Band 5

Band 6

Band 7/8

Resources

Clinical Learning

Non-Clinical

Other Learning

Introduction to Clinical Research (National Institute for Health Research)

Course provider: National Institute for Health Research

Cost: Free

Duration: 2 hours 40 minutes

Web page: [Find out more on Introduction to Clinical Research](#)

A free online course, created by the National Institute for Health Research (NIHR), providing an overview of different types of research and the clinical research process. Suitable for anyone wanting to know more about how research trials are carried out, to increase their confidence in talking to patients about research or starting a career in research. This is a self-directed learning course and does not contain any assessment. You can log in at any time and work through the course at a pace that suits you.

Learning outcomes

Upon completing this course you should be able to:

- Identify different types of research
- Understand the research process
- Recall information about clinical trial phases
- Understand clinical research terms such as blinding and placebos
- The course also covers an introduction to study set-up and conduct, data quality and management, and research regulation and governance.

Close

Welcome

Band 5

Band 6

Band 7/8

Resources

Clinical Learning

Non-Clinical

Other Learning

Get It On Time – Parkinson’s medication for staff who don’t administer (Excellence Network)

Course provider: Parkinson’s UK

Cost: Free

Duration: 1 hour minimum

Web page: [Find out more on Get It On Time – Parkinson’s medication for staff who don’t administer](#)

The course focuses on the importance of Parkinson’s medications being given on time, with a particular focus for staff who don’t administer medications.

Learning outcomes

The course focuses on the following areas:

- What is Parkinson's?
- The symptoms of Parkinson's.
- Treatments for Parkinson's.
- Why medicine should be given on time.

These will enable participants to:

- recognise and appreciate key Parkinson's symptoms
- improve their practice in caring for people with Parkinson's
- understand why it is vital that Parkinson's medication is given on time

Close

Welcome

Band 5

Band 6

Band 7/8

Resources

Clinical Learning

Non-Clinical

Other Learning

Mental health professionals – what you need to know about Parkinson's

Course provider: Parkinson's UK

Cost: Free

Duration: 15 Minutes

Web page: [Find out more on Mental health professionals – what you need to know about Parkinson's](#)

This 15-minute course provides a background to understanding Parkinson's and discusses the mental health specific aspects of the condition that are of direct relevance to professionals working in mental health services. This course has been developed to assist mental health professionals in continuing to support people with Parkinson's, as effectively as possible.

Learning outcomes

The course covers the following areas:

- What Parkinson's is
- The impact of a diagnosis
- Common psychological difficulties associated with Parkinson's

By the end of the course you should be able to:

- Have a better understanding of Parkinson's and its common motor and non-motor symptoms. Teach cognitive strategies for non-motor symptoms of Parkinson's
- Recognise that psychological difficulties experienced by people with Parkinson's are a complex interplay between neurobiological, psychological and social factors
- Recognise and understand the ways in which people's mental health is impacted following a Parkinson's diagnosis
- Understand more about the ways in which Parkinson's symptoms and mental health can interact and create patterns of "stuckness"

Close

Welcome

Band 5

Band 6

Band 7/8

Resources

Clinical Learning

Non-Clinical

Other Learning

Pharmacists - what you need to know about Parkinson's

Provider: Parkinson's UK

Cost: Free

Web page: [Find out more on Pharmacists - what you need to know about Parkinson's](#)

This 15- minute course provides a background to understanding Parkinson's and discusses specific aspects of the condition that are of direct relevance to pharmacists. This course has been developed to assist pharmacists in continuing to support people with Parkinson's, as effectively as possible.

What will participants learn?

The course covers the following areas:

- What Parkinson's is
- Common symptoms
- Drug therapy for Parkinson's
- Medication side effects

By the end of the course you will have:

- Knowledge of the common symptoms of Parkinson's (both motor and non-motor)
- An understanding of some of the challenges and side effects associated with drug therapy for Parkinson's
- An awareness of opportunities for further support

Close

Welcome

Band 5

Band 6

Band 7/8

Resources

Band 7/8

Clinical Learning

Non-Clinical

Other Learning

Select your learning category

Close

Welcome

Band 5

Band 6

Band 7/8

Resources

Clinical Learning

Non-Clinical

Other Learning

- [The Nursing Management of Parkinson's Disease-related Conditions \(MPEC\)](#)
- [Enhanced Parkinson's Disease Management](#)
- [Parkinson's: Managing bone health and fracture risk \(Excellence Network\)](#)
- [Foundation Masterclass \(Parkinson's Academy\)](#)
- [Parkinson's: Managing palliative and end of life care \(Excellence Network\)](#)
- [Palliative Care Masterclass \(Parkinson's Academy\)](#)
- [Non-Medical Prescribing Programme](#)
- [PDSAFE: Physiotherapy and Falls Prevention in Parkinson's](#)
- [A Map of Parkinson's](#)
- [Get It On Time – Parkinson's Medication](#)
- [Managing Bowel and Bladder Problems in Parkinson's](#)
- [Diet and Parkinson's Disease](#)
- [Good Practice in Commencing and Changing Parkinson's Medication Regimes](#)
- [Advanced Masterclass \(Parkinson's Academy\)](#)
- [Lewy Body Dementia Bitesize](#)
- [Management and treatment of chronic sialorrhea \(drooling\) due to Parkinson's. \(Merz Therapeutics in partnership with Parkinson's UK\)](#)
- [Kinetics Film](#)

Next

Welcome

Band 5

Band 6

Band 7/8

Resources

Clinical Learning

Non-Clinical

Other Learning

The nursing management of Parkinson's Disease-related conditions

Course provider: Swansea University

Cost: 30 credit level and 40 credit level costs available on enquiry

Web page: [Find out more on The nursing management of Parkinson's Disease-related conditions](#)

Contact: Tony Duffy a.w.duffy@swansea.ac.uk;

Louise Ebenezer louise.ebenezer@wales.nhs.uk

General & Neurophysiology

SC1, 2, 3, 4, 5, 6, 7, 8, 10, 11 x1, 13
KSF Core 1 Level 2
HWB in part

This is a 2 week taught module at degree and Masters level. It can be studied as a stand-alone module or part of a degree. It will enable registered practitioners to practice competently as a member of the multi-disciplinary team within the specialist field of caring for people affected by Parkinson's. This is a very well recognised course considered essential for all new or aspiring Parkinson's nurses.

Learning outcomes

By the end of this module the student should be able to:

- Critically review the current concepts related to the pathophysiology and epidemiology of Parkinson's
- Critically review the range of treatments available for the management of Parkinson's
- Provide a range of treatments, monitor their effectiveness and take appropriate actions to maintain patient comfort
- Critically discuss the role of the PDSN in the management of Parkinson's-related conditions
- Contribute further in the co-ordination and collaboration of the multidisciplinary team
- Critically analyse the psychosocial and cultural factors which may influence the delivery of care to people with Parkinson's and their carers and families
- Critically analyse the application of theory for practice in a variety of situations within the context of caring for people with Parkinson's and their carers, utilising an integrated MDT approach
- Critically assess available strategies with informed, flexible and innovative approaches to meeting the specific needs of an individual with Parkinson's
- Demonstrate an enquiring approach to this specialist area of practice through reflection, discussion and dissemination of acquired skills and knowledge underpinning practice.

Next

Welcome

Band 5

Band 6

Band 7/8

Resources

Clinical Learning

Non-Clinical

Other Learning

Enhanced Parkinson's Disease Management

Course provider: Plymouth University

Cost: Check with provider

Web page: [Find out more on Enhanced Parkinson's Disease Management](#)

General & Neurophysiology

SC1, 2, 3, 4, 5, 6, 7, 8, 9, 10,
11 x4, 12, 13
KSF Core 1-6 Level 2
HWB in part

This course is currently not running, plans are underway to continue to deliver, please check back later.

This 40 credit degree-level module enables you to become competent in assessing, planning, delivering, evaluating and leading the care of people with Parkinson's, and to give support and advice to their carers. You will develop an enquiring mind for leading and influencing change in Parkinson's services. With subject-specific knowledge and skills, you will be able to promote high-quality care within the clinical setting through dissemination of evidence-based information. The course is normally planned to run over a 6 month period. Delivery consists of keynote lectures, group work, expert patient, student-led activities, digital media and blended learning.

Learning outcomes

At the end of the module the learner will be expected to be able to:

- Demonstrate a significant knowledge and critical understanding of the physical and psychosocial implications of Parkinson's for individuals and their carers
- Systematically assess, plan, implement and critically evaluate the care of the Parkinson's patients and their carers
- Lead and work effectively and collaboratively to meet the needs of the individual client and demonstrate leadership to ensure high-quality, effective management of Parkinson's
- Systematically apply an in-depth knowledge of the pathophysiology of Parkinson's and analysis of its pharmacological management and use this to support the learning of others
- Critically apply and disseminate relevant evidence to support care management and service development
- Identify, discuss and apply political and professional issues related to this area of healthcare.

Next

Welcome

Band 5

Band 6

Band 7/8

Resources

Clinical Learning

Non-Clinical

Other Learning

Parkinson's: Managing bone health and fracture risk – online

Course provider: Parkinson's UK and Open University

Cost: Free

Duration: Approximately 10 hours

Web page: [Find out more on Parkinson's: Managing bone health and fracture risk – online](#)

Bone Health

SC2, 3, 6, 11(b) in full
SC1, 4, 5, 7, 9, 10, 11(c), 11(d), 12 in part
KSF Core 1-6 Level 2/3
HWB in part
G1 Level 2 in part

This course has been designed for professionals, such as Parkinson's Nurse Specialists and other clinicians, who provide clinical input for people with Parkinson's in outpatient and inpatient settings. Its purpose is to enhance your understanding and recognition of bone health issues in Parkinson's and to guide you in assessing and managing the increased fracture risks associated with the condition. The course aims to improve your confidence in identifying factors which impact on falls risk, to teach you about the structure and metabolism of bone, to explain the reasons why bone may be more vulnerable to fracture in Parkinson's and to outline the options for reducing fracture risk through medication and lifestyle. This will take no more than 10 hours to study, and on successful completion you will gain the digital badge *Parkinson's: Managing Bone Health and Fracture Risk*.

Learning outcomes

By the end of this course you will be able to:

- Understand the importance of falls and fracture prevention in Parkinson's
- Determine the general and Parkinson's-specific risk factors that can lead to falls
- Understand the consequences of a fall, particularly the sequelae of hip fracture
- Understand the nature of osteoporosis, and identify the particular contributors to osteoporosis in Parkinson's
- Use FRAX and QFracture risk assessment tools appropriately to determine osteoporosis risk in Parkinson's
- Interpret the osteoporosis risk within the current NOGG treatment guidance and understand the limitations of this guidance in Parkinson's
- Devise a management plan for a person with Parkinson's according to a provided algorithm.

Next

Welcome

Band 5

Band 6

Band 7/8

Resources

Clinical Learning

Non-Clinical

Other Learning

Foundation MasterClass (Parkinson's Academy)

Course provider: Parkinson's Academy

Price on application

Web page: [Find out more on Foundation MasterClass \(Parkinson's Academy\)](#)

This course is designed for non-final year registrars, old age psychiatry registrars, Parkinson's nurses within the first 18 months of post, occupational therapists, speech and language therapists, pharmacists, clinical fellows and clinical lecturers. The course is set as one module over 2 days with one residential evening. The course will advance your understanding of Parkinson's and related movement disorders.

Learning outcomes

You will come away from this course with an understanding of:

- Epidemiology, genetics, anatomy and basic pathophysiology of Parkinson's
- Differential diagnosis including clinical imaging
- Motor and non-motor symptoms and how to manage them
- Clinical skills, challenge tests and simple neurological examination
- Early treatment options
- Management of late-stage disease including drugs, invasive options, and surgery
- Issues relating to inpatients with Parkinson's
- Neuropsychiatric complications
- Palliative care.

Neurophysiology

SC1, 4, 5, 9, 10, 13
SC11 x4 in part
KSF Core 1, 2 & 4 at Level 2/3
HWB in part
G1 Level 2 in part

Next

Welcome

Band 5

Band 6

Band 7/8

Resources

Clinical Learning

Non-Clinical

Other Learning

Parkinson's: Managing palliative and end of life care

Course provider: Parkinson's UK and Open University

Cost: Free

Duration: Approximately 10 hours

Web page: [Find out more on Parkinson's: Managing palliative and end of life care](#)

Palliative Care

SC1, 5, 6, 7, 9, 10, 11(b), 11(d),
12 in part
KSF Core 1-6 Level 2/3
HWB in part
G1 Level 2 in part

Created by Parkinson's UK and the Open University online, this course takes approximately 10 hours to complete. It has been designed for professionals, such as Parkinson's Nurse Specialists and other clinicians, who work as part of the specialist team during the palliative and end-of-life phases. It may also be useful for health and social care professionals who already have experience of working with people with Parkinson's, but wish to enhance their knowledge of palliative and end of life care in Parkinson's.

Learning outcomes

Having completed the course participants will be able to:

- Demonstrate an understanding of the principles of palliative and end of life care and how these can be applied in Parkinson's
- Identify the challenges in practice of applying palliative and end of life care principles in Parkinson's
- Confidently discuss the theory of advance care planning and the issues involved, such as power of attorney or advance decision to refuse treatment
- Identify symptoms which indicate the end of life phase in Parkinson's and highlight the issues in management of this phase
- Be aware of the needs of the family/carers of the client throughout the end of life phase and bereavement.

Next

Welcome

Band 5

Band 6

Band 7/8

Resources

Clinical Learning

Non-Clinical

Other Learning

Palliative Care Masterclass

Course provider: Parkinson's Academy

Duration: 2 days (residential in Sheffield)

Cost: Contact provider

Web page: [Find out more on Palliative Care MasterClass](#)

Palliative Care

SC1, 2, 4-11 in part
KSF Core 1-6 Level 2/3
HWB in part
G1 Level 2 in part

This Masterclass is aimed at health professionals involved in palliative care for patients with neurological conditions (mainly Parkinson's, dementia and multiple sclerosis). This includes allied health professionals, doctors (grade SpR and above), specialist nurses, community teams and GPs.

Learning outcomes

You will come away from this course with an understanding of:

- Specific unmet palliative care needs in Parkinson's, dementia, MS and MND
- Palliative assessment tools
- Disease-specific issues faced by patients
- Commonly encountered medications and their side effects
- Terminal stages - particularly how to identify and manage drug therapies in final days
- Service considerations and delivery
- Promoting autonomy - how and when to consider ACP in the context of cognitive impairment
- Examples of good practice, discussion of how such practice could be spread and incorporated elsewhere
- Future directions and research, and quality improvement opportunities.

Next

Welcome

Band 5

Band 6

Band 7/8

Resources

Clinical Learning

Non-Clinical

Other Learning

Non-Medical Prescribing Programme

Course provider: University of Northampton

**Cost: Full time (40 credits) Part time (20 credits) costs available on enquiry
(Funding for these modules may be available)**

Web page: [Find out more on Non-Medical Prescribing Programme](#)

Contact: julie.jolloway@northampton.ac.uk

Prescribing

SC2, 4, 5, 6, 7 in part
KSF Core 1-6 Level 2/3
HWB in part
G1 Level 2 in part

These modules aim to equip students with the theoretical knowledge and practical experience required to become a non-medical prescriber. At present these include the Nursing and Midwifery Council (NMC) approved programmes and the HCPC approved programme for podiatrists.

Learning outcomes

At the end of the module the practitioner/student will be able to:

- Demonstrate a strong clinical, pharmacological and pharmaceutical evidence based by justifying rationales for best prescribing practice
- Critically apply knowledge of drug actions in prescribing practice in order to prescribe safely, appropriately and cost effectively
- Appraise formulated solutions to complex situations, employing relevant legal and ethical frameworks
- Critically evaluate personal and professional accountability in relation to prescribing practice within contemporary public health policy, regulatory and quality frameworks
- Demonstrate technical mastery when conducting complex holistic assessment, and consultation with patients and carers, documenting appropriately
- Critically reflect on issues surrounding concordance, justifying prescribing options with regard to safety, cost, efficacy and patient choice
- Communicate and engage with patients and carers in a professional and sensitive matter
- Exercise a critical awareness of autonomous practice within a multidisciplinary team framework.

Next

Welcome

Band 5

Band 6

Band 7/8

Resources

Clinical Learning

Non-Clinical

Other Learning

PDSAFE: Physiotherapy and Falls Prevention in Parkinson's

Course provider: University of Exeter & University of Southampton

Cost: Check with provider

Web page: [Find out more on PDSAFE: Physiotherapy and Falls Prevention in Parkinson's](#)

On this course, you'll learn to understand the background evidence and research behind PDSAFE, as well as gain the skills to deliver high quality falls prevention treatment for people living with Parkinson's.

You'll explore what the PDSAFE clinical trial concluded, and how this can be applied and delivered in the clinical setting. You'll learn how to apply this learning to clinical case studies for practical delivery.

Learning Outcomes

- Explore the importance of falls for people living with Parkinson's
- Discuss what the current evidence says about the methods to treat falls in Parkinson's
- Identify what the clinical trial PDSAFE found out and how this can be applied in the clinical setting
- Explain how to deliver the PDSAFE falls prevention treatment approach
- Describe how to apply this learning to clinical case studies for practical delivery

Next

Welcome

Band 5

Band 6

Band 7/8

Resources

Clinical Learning

Non-Clinical

Other Learning

A Map of Parkinson's

Course provider: Phoenix-Aragon Education

Cost: Price on application

Web page: [Find out more on A Map of Parkinson's](#)

What will you learn?

You will study around 50 symptoms associated with Parkinson's, separated into the following 8 modules:

- introduction (free)
- pain and fatigue
- impacts of Parkinson's on personal and public life
- cognition, perception and motivation
- sleep and night-time issues
- motor symptoms
- neuropsychiatric symptoms
- autonomic, gastrointestinal and sensory symptoms

How does it work?

The course has been designed to be studied at your own pace online or offline.

The introductory module is free, and you can get the course at a reduced price of £44 by registering with an email address before starting this introductory module.

The course includes links to further online materials, such as information sheets, peer-reviewed articles, online seminar recordings, video clips, podcasts and other resources.

You can complete this course within a few weeks if you have plenty of study time, otherwise short sessions at regular intervals will take a few months.

On completion of the course you can download and print a record of completion showing total time spent engaged with the 8 modules

Next

Welcome

Band 5

Band 6

Band 7/8

Resources

Clinical Learning

Non-Clinical

Other Learning

Get It On Time – Parkinson’s Medication

Course provider: Parkinson’s UK/Lancashire Teaching Hospitals NHS Foundation Trust

Cost: Free

Web page: [Find out more on Get It On Time - Parkinson's Medication](#)

How does it work?

You will be able to read, watch and listen to multimedia and interactive resources on Parkinson's and the importance of medication timing in hospitals. You will then take an assessment (multiple choice quiz) to demonstrate what you have learnt. A certificate is available to once you have passed the assessment, which gives 1 CPD point. The course and assessment should take between 1 and 2 hours to complete.

What will participants learn?

The course focuses on the following areas:

- What is Parkinson's?
- The symptoms of Parkinson's.
- Treatments for Parkinson's.
- Why medicine should be given on time.

These will enable participants to:

- recognise and appreciate key Parkinson's symptoms
- improve their practice in caring for people with Parkinson's
- improve their practice in the management of Parkinson's
- understand why it is vital that Parkinson's medication is given on time

Participants will finish the course with a good overview of Parkinson's and the knowledge to support improvement of their practice and that of their colleagues.

Next

Welcome

Band 5

Band 6

Band 7/8

Resources

Clinical Learning

Non-Clinical

Other Learning

Managing Bowel and Bladder Problems in Parkinson's

Course provider: Parkinson's Academy

Cost: Free Webinar

Web page: [Find out more on Managing Bowel and Bladder Problems in Parkinson's](#)

What does the data tell us about the need for early intervention in bladder and bowel complications in Parkinson's and what is your role both in primary and secondary care to ensure best outcomes for your patients.

Join the panel to learn about this important aspect of Parkinson's management.

Session recording available on YouTube and slides available on website.

Next

Welcome

Band 5

Band 6

Band 7/8

Resources

Clinical Learning

Non-Clinical

Other Learning

Diet and Parkinson's Disease

Course provider: Parkinson's Academy

Cost: Free Webinar

Web page: [Find out more on Diet and Parkinson's Disease](#)

This recorded webinar will cover:

- Constipation
- Dehydration
- Gastroparesis
- Vitamin D
- Protein

Session recording available on YouTube and slides available on website.

Next

Welcome

Band 5

Band 6

Band 7/8

Resources

Clinical Learning

Non-Clinical

Other Learning

Good Practice in Commencing and Changing Parkinson's Medication Regimes

Course provider: Parkinson's Academy

Cost: Free Webinar

Web page: [Find out more on Good Practice in Commencing and Changing Parkinson's Medication Regimes](#)

Online webinar will cover:

- Getting started
- Person-centered care
- Communication
- Signposting
- Changing therapy

Session recording available on YouTube and slides available on website.

Next

Welcome

Band 5

Band 6

Band 7/8

Resources

Clinical Learning

Non-Clinical

Other Learning

Advanced MasterClass (Parkinson's Academy)

Course provider: Parkinson's Academy

Price on application

Web page: [Find out more on Advanced MasterClass](#)

This course is designed for consultants, experienced Parkinson's nurses, final year registrars, final year old age psychiatry registrars, GPwSIs, experienced neurosciences pharmacists, associate specialists and staff grade physicians. The course will advance understanding of Parkinson's and related movement disorders through taught sessions and mentorship (a mentor will be appointed for each participant). The 2 Advanced Masterclass modules are approved by the Federation of the Royal Colleges of Physicians of the United Kingdom for 27 category 1 (external) CPD credits.

Learning outcomes

Learners will come away from this course with an understanding of:

- Basic pathology, anatomy, genetics and neurophysiology of Parkinson's
- The basics of building a Parkinson's service
- Differential diagnosis
- The principles of how to give a diagnosis to patients and their family and carers
- Early treatment options
- Practical aspects of managing dementia, depression, anxiety and psychosis in Parkinson's
- Non-motor issues
- Drug management in complex Parkinson's
- Transition from complex to palliative care
- Surgical procedures, selection, suitability and related practical aspects
- Current evidence for practice

Neurophysiology

SC1, 2, 3, 4, 5, 6, 8, 9, 10, 11
x3, 13
KSF Core 1-6 Level 2/3
HWB in part

Close

Welcome

Band 5

Band 6

Band 7/8

Resources

Clinical Learning

Non-Clinical

Other Learning

Lewy Body Dementia Bitesize

Course provider: Lewy Body Academy/Neurology Academy

Cost: Free

Duration: Up to 15 minutes each

Web page: [Find out more on Lewy Body Dementia Bitesize](#)

This course is perfect for anyone working in neurology, medicine for the elderly or old age psychiatry. The course is also useful for therapists, those in nursing roles in hospital or the community, and could provide helpful baseline knowledge for those in general practice.

Learning outcomes

Our Lewy Body Bitesize course is intended for anyone looking to develop a basic understanding of Lewy body dementia:

- what it looks like and how to diagnose it
- effective management across different types of symptoms
- future treatment opportunities.

Close

Welcome

Band 5

Band 6

Band 7/8

Resources

Clinical Learning

Non-Clinical

Other Learning

Management and treatment of chronic sialorrhea (drooling) due to Parkinson's. (Merz Therapeutics in partnership with Parkinson's UK)

Course provider: Parkinson's UK

Cost: Free

Duration: 2 hours

Web page: [Find out more on Management and treatment of chronic sialorrhea \(drooling\) due to Parkinson's](#)

An online course examining the management and treatment of chronic sialorrhea in Parkinson's. This educational module has been initiated and funded by Merz therapeutics.

Learning outcomes

The course focuses on the following areas:

- What is sialorrhea?
- Impact of sialorrhea
- Assessing and managing chronic drooling
- Botulinum neurotoxin type A injections

Close

Welcome

Band 5

Band 6

Band 7/8

Resources

Clinical Learning

Non-Clinical

Other Learning

Kinetics Film

Course provider: DT2 Productions

Cost: Free

Duration: 1 hour

Web page: [Find out more on Kinetics Film](#)

Kinetics is based on the true story of Sue Wylie's journey to being diagnosed with Parkinson's, the impact on her everyday life and acceptance of living with Parkinson's.

This resource is suitable for all health and social care professionals.

Close

Welcome

Band 5

Band 6

Band 7/8

Resources

Clinical Learning

Non-Clinical

Other Learning

- [Parkinson's: train the trainer \(Excellence Network\)](#)

Next

Welcome

Band 5

Band 6

Band 7/8

Resources

Clinical Learning

Non-Clinical

Other Learning

Parkinson's: train the trainer

Course provider: Parkinson's UK

Cost: Free

Duration: 14 hours

Web page: [Find out more on Parkinson's: train the trainer](#)

Delivering & Planning Education

SC1, 3, 5-10, 11 x4, 12

KSF Core 1-6 in part Level 2/3

HWB in part

G1 Level 1

This course is for experienced health and social care trainers who want to learn how to deliver a 3 hour course on Parkinson's to their colleagues (you can deliver the course in more than one session if required).

In order to become a UK Parkinson's Excellence Network trained trainer you need to complete 2 courses and attend a webinar. The first course provides the background knowledge and understanding of Parkinson's. Once you've completed and passed this, you can access the second course which teaches you how to deliver the Parkinson's Explained presentation. You'll then be able to deliver this at your place of work, fully endorsed by PDNSA. You'll also receive a full training pack, allowing you to start delivering the training immediately.

Learning outcomes

On completion of the course participants will:

- Understand the impact of Parkinson's, including motor and non-motor symptoms, communication and cognition issues, and management of Parkinson's
- Evaluate your own practice and care of people with Parkinson's
- Deliver the Parkinson's Explained training session to your staff
- Recognise the role of the UK Parkinson's Excellence Network and how you can work with us.

Next

Welcome

Band 5

Band 6

Band 7/8

Resources

Clinical Learning

Non-Clinical

Other Learning

- [Introduction to Clinical Research \(NIHR Learn\)](#)
- [Get it on Time – for staff who don't administer](#)
- [Mental health professionals - what you need to know about Parkinson's](#)
- [Pharmacists - what you need to know about Parkinson's](#)

Close

Welcome

Band 5

Band 6

Band 7/8

Resources

Clinical Learning

Non-Clinical

Other Learning

Introduction to Clinical Research (National Institute for Health Research)

Course provider: National Institute for Health Research

Cost: Free

Duration: 2 hours 40 minutes

Web page: [Find out more on Introduction to Clinical Research](#)

A free online course, created by the National Institute for Health Research (NIHR), providing an overview of different types of research and the clinical research process. Suitable for anyone wanting to know more about how research trials are carried out, to increase their confidence in talking to patients about research or starting a career in research. This is a self-directed learning course and does not contain any assessment. You can log in at any time and work through the course at a pace that suits you.

Learning outcomes

Upon completing this course you should be able to:

- Identify different types of research
- Understand the research process
- Recall information about clinical trial phases
- Understand clinical research terms such as blinding and placebos
- The course also covers an introduction to study set-up and conduct, data quality and management, and research regulation and governance.

Next

Welcome

Band 5

Band 6

Band 7/8

Resources

Clinical Learning

Non-Clinical

Other Learning

Get It On Time – Parkinson’s medication for staff who don’t administer (Excellence Network)

Course provider: Parkinson’s UK

Cost: Free

Duration: 1 hour minimum

Web page: [Find out more on Get It On Time – Parkinson’s medication for staff who don’t administer](#)

The course focuses on the importance of Parkinson’s medications being given on time, with a particular focus for staff who don’t administer medications.

Learning outcomes

The course focuses on the following areas:

- What is Parkinson's?
- The symptoms of Parkinson's.
- Treatments for Parkinson's.
- Why medicine should be given on time.

These will enable participants to:

- recognise and appreciate key Parkinson's symptoms
- improve their practice in caring for people with Parkinson's
- understand why it is vital that Parkinson's medication is given on time

Next

Welcome

Band 5

Band 6

Band 7/8

Resources

Clinical Learning

Non-Clinical

Other Learning

Mental health professionals – what you need to know about Parkinson's

Course provider: Parkinson's UK

Cost: Free

Duration: 15 Minutes

Web page: [Find out more on Mental health professionals – what you need to know about Parkinson's](#)

This 15-minute course provides a background to understanding Parkinson's and discusses the mental health specific aspects of the condition that are of direct relevance to professionals working in mental health services. This course has been developed to assist mental health professionals in continuing to support people with Parkinson's, as effectively as possible.

Learning outcomes

The course covers the following areas:

- What Parkinson's is
- The impact of a diagnosis
- Common psychological difficulties associated with Parkinson's

By the end of the course you should be able to:

- Have a better understanding of Parkinson's and its common motor and non-motor symptoms. Teach cognitive strategies for non-motor symptoms of Parkinson's
- Recognise that psychological difficulties experienced by people with Parkinson's are a complex interplay between neurobiological, psychological and social factors
- Recognise and understand the ways in which people's mental health is impacted following a Parkinson's diagnosis
- Understand more about the ways in which Parkinson's symptoms and mental health can interact and create patterns of "stuckness"

Next

Welcome

Band 5

Band 6

Band 7/8

Resources

Clinical Learning

Non-Clinical

Other Learning

Pharmacists - what you need to know about Parkinson's

Provider: Parkinson's UK

Cost: Free

Web page: [Find out more on Pharmacists - what you need to know about Parkinson's](#)

This 15- minute course provides a background to understanding Parkinson's and discusses specific aspects of the condition that are of direct relevance to pharmacists. This course has been developed to assist pharmacists in continuing to support people with Parkinson's, as effectively as possible.

What will participants learn?

The course covers the following areas:

- What Parkinson's is
- Common symptoms
- Drug therapy for Parkinson's
- Medication side effects

By the end of the course you will have:

- Knowledge of the common symptoms of Parkinson's (both motor and non-motor)
- An understanding of some of the challenges and side effects associated with drug therapy for Parkinson's
- An awareness of opportunities for further support

Next

Welcome

Band 5

Band 6

Band 7/8

Resources

Resources

Organisations



[UK Parkinson's Excellence Network](#)



[Parkinson's Academy](#)



[Parkinson's Disease Nurse Specialist Association](#)



Alliance of Scottish Parkinson's Disease Nurse Specialists

Next

Welcome

Band 5

Band 6

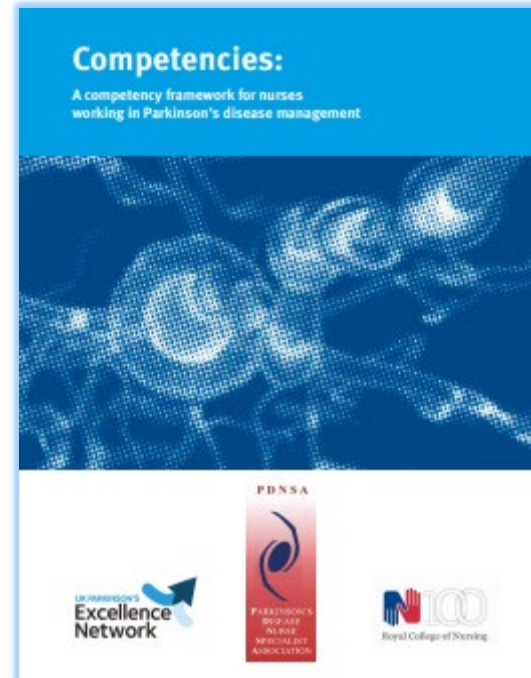
Band 7/8

Resources

Resources

Publications

- ▶ [NICE guideline for Parkinson's disease in adults](#)
- ▶ [Best practice pathway for non-oral treatments in Parkinson's](#)
- ▶ [Dementia interactive care pathway toolkit](#)
- ▶ [OPTIMAL Calculator](#)
- ▶ [Competencies: A competency framework for nurses working in Parkinson's disease management](#)



A competency framework for nurses working in Parkinson's disease management

Close

Welcome

Band 5

Band 6

Band 7/8

Resources

Clinical Learning

Non-Clinical

Other Learning

A Map of Parkinson's

Course provider: Phoenix-Aragon Education

Cost: Free (introductory module). £55 or £44 with voucher (full course)

Web page: [Find out more on A Map of Parkinson's](#)

What will you learn?

You will study around 50 symptoms associated with Parkinson's, separated into the following 8 modules:

- introduction (free)
- pain and fatigue
- impacts of Parkinson's on personal and public life
- cognition, perception and motivation
- sleep and night-time issues
- motor symptoms
- neuropsychiatric symptoms
- autonomic, gastrointestinal and sensory symptoms

How does it work?

The course has been designed to be studied at your own pace online or offline.

The introductory module is free, and you can get the course at a reduced price of £44 by registering with an email address before starting this introductory module.

The course includes links to further online materials, such as information sheets, peer-reviewed articles, online seminar recordings, video clips, podcasts and other resources.

You can complete this course within a few weeks if you have plenty of study time, otherwise short sessions at regular intervals will take a few months.

On completion of the course you can download and print a record of completion showing total time spent engaged with the 8 modules

Next

Welcome

Band 5

Band 6

Band 7/8

Resources

Clinical Learning

Non-Clinical

Other Learning

Get It On Time – Parkinson's Medication

Course provider: Lancashire Teaching Hospitals NHS Foundation Trust

Cost: Free

Web page: [Find out more on Get It On Time - Parkinson's Medication](#)

How does it work?

You will be able to read, watch and listen to multimedia and interactive resources on Parkinson's and the importance of medication timing in hospitals. You will then take an assessment (multiple choice quiz) to demonstrate what you have learnt.

A certificate is available to download once you have passed the assessment, which gives 1 CPD point. The course and assessment should take between 1 and 2 hours to complete.

What will participants learn?

The course focuses on the following areas:

- What is Parkinson's?
- The symptoms of Parkinson's.
- Treatments for Parkinson's.
- Why medicine should be given on time.

These will enable participants to:

- recognise and appreciate key Parkinson's symptoms
- improve their practice in caring for people with Parkinson's
- improve their practice in the management of Parkinson's
- understand why it is vital that Parkinson's medication is given on time

Participants will finish the course with a good overview of Parkinson's and the knowledge to support improvement of their practice and that of their colleagues.

Next

Welcome

Band 5

Band 6

Band 7/8

Resources

Clinical Learning

Non-Clinical

Other Learning

Managing Bowel and Bladder Problems in Parkinson's

Course provider: Parkinson's Academy

Cost: Free Webinar

Web page: [Find out more on Managing Bowel and Bladder Problems in Parkinson's](#)

What does the data tell us about the need for early intervention in bladder and bowel complication's in Parkinson's and what is your role both in primary and secondary care to ensure best outcomes for your patients.

Join the panel to learn about this important aspect of Parkinson's management.

Session recording available on YouTube and slides available on website.

Next

Welcome

Band 5

Band 6

Band 7/8

Resources

Clinical Learning

Non-Clinical

Other Learning

Diet and Parkinson's Disease

Course provider: Parkinson's Academy

Cost: Free Webinar

Web page: [Find out more on Diet and Parkinson's Disease](#)

This recorded webinar will cover:

- Constipation
- Dehydration
- Gastroparesis
- Vitamin D
- Protein

Session recording available on YouTube and slides available on website.

Next

Welcome

Band 5

Band 6

Band 7/8

Resources

Clinical Learning

Non-Clinical

Other Learning

Good Practice in Commencing and Changing Parkinson's Medication Regimes

Course provider: Parkinson's Academy

Cost: Free Webinar

Web page: [Find out more on Good Practice in Commencing and Changing Parkinson's Medication Regimes](#)

Online webinar will cover:

- Getting started
- Person-centred care
- Communication
- Signposting
- Changing therapy

Session recording available on YouTube and slides available on website.

Next

Welcome

Band 5

Band 6

Band 7/8

Resources